

Specifications

Feed Conveyor	
Length	14' (4,267 mm)
Width	60" (1,524 mm)
Motor	High-torque Brevini planetary
Top Feed Roll	
Motor	High-torque Poclairn
Bottom Feed Roll	
Motor	High-torque Brevini planetary
Discharge Conveyor	
Length	33' 0" (10,058 mm)
Width	60" (1,524 mm)
Discharge Height	14' 9" (4,495 mm)
Motor	High-torque
Metal Release System	
	Shear pins for anvil and screens
Shaft and Bearing	
Diameter/Type	6"/SKF
Hydraulics	
Type	Hydrostatic/Rexroth
Throughput	
	Up to 200 tons (182 metric tons)/hr.
Power	
Engine	
Standard:	CAT C18; 765 HP (570kW)
Option 1:	CAT 3412E; 1000 HP (750 kW)
Option 2:	CAT C27; 1050 HP (787 kW)
Stationary:	500-1,000 HP electric

Drive	10-12 groove, 8-V section Kevlar® belt, with guarding
Flexxaire® Fan	Reversing pitch radiator fan that reverses airflow every 5 minutes automatically.
Fuel Tank	
Capacity	450 gallons (1,701 liters)
Electrical	
	Radio remote control for all functions; full, independent mechanical backup; IntelliGrind automatic variable speed feed system
Options	
Magnetic Head Pulley	with diverter chute
Overband Magnet	hydraulic drive; with diverter chute
Tracks	
	Intertractor track frames with Bonfiglioli planetary and Rexroth motors; 2-speed option; 500 mm and 600 mm track width options
Wheels	
	Super Single wheels



Magnum Force Series Next Generation Horizontal Hog

6400



Features

- Four interchangeable rotors - solid steel, drum, 2 pocket and 4 pocket chipper
- Metal Release System protects rotor, anvil, and screens
- Pre-screen conveyor transports fines screened out by bottom feed roll to mix with ground material or diverted to stockpile
- Clamshell opening for ease of maintenance
- Track, portable, or stationary
- Choice of three CAT engines up to 1050 HP, or electric drive
- Full radio remote control and full mechanical control backup
- CBI IntelliGrind™ control system
- Highest-quality components used throughout including CAT, Rexroth, Poclairn, PT Tech, Brevini, Bonfiglioli, SKF, Hardox, Weldom, etc.

Description

The Magnum Force 6400 is the first of the next generation of grinders, where owners can select from four different field-swappable rotors to accommodate changing materials and processing demands.

This unique design provides the flexibility to process an exceptionally wide variety of materials and generate the products that your clients demand – all with a single machine. Within a day, you can go from making high quality mulch from trees and stumps, to chipping stemwood into chips in custom sizes ranging from 2-30mm, to grinding highly contaminated C&D or railroad ties with the tie plates attached just by swapping rotors and screens. This unbelievable versatility guarantees that you will always have the right machine for the job when market demands change and opportunities come knocking on your door. There is no machine on the planet that will give you more bang for the buck or a better return on your investment.

Feed Conveyor

The 14' long by 60" wide feed conveyor with high troughing sides which facilitates the continuous feed of whole trees and large volumes of materials. Proven heavy-duty pulleys, belts and top and bottom rollers provide tens of thousands of hours of trouble-free operation.

Pre-Screener

The feed system provides for pre-screening of abrasive fines and dirt prior to grinding. A bidirectional conveyor allows these fines to be mixed with ground product or be diverted forward and stockpiled.

Hog and Interchangeable Rotors

With the push of a button, the unique clamshell design of the hog

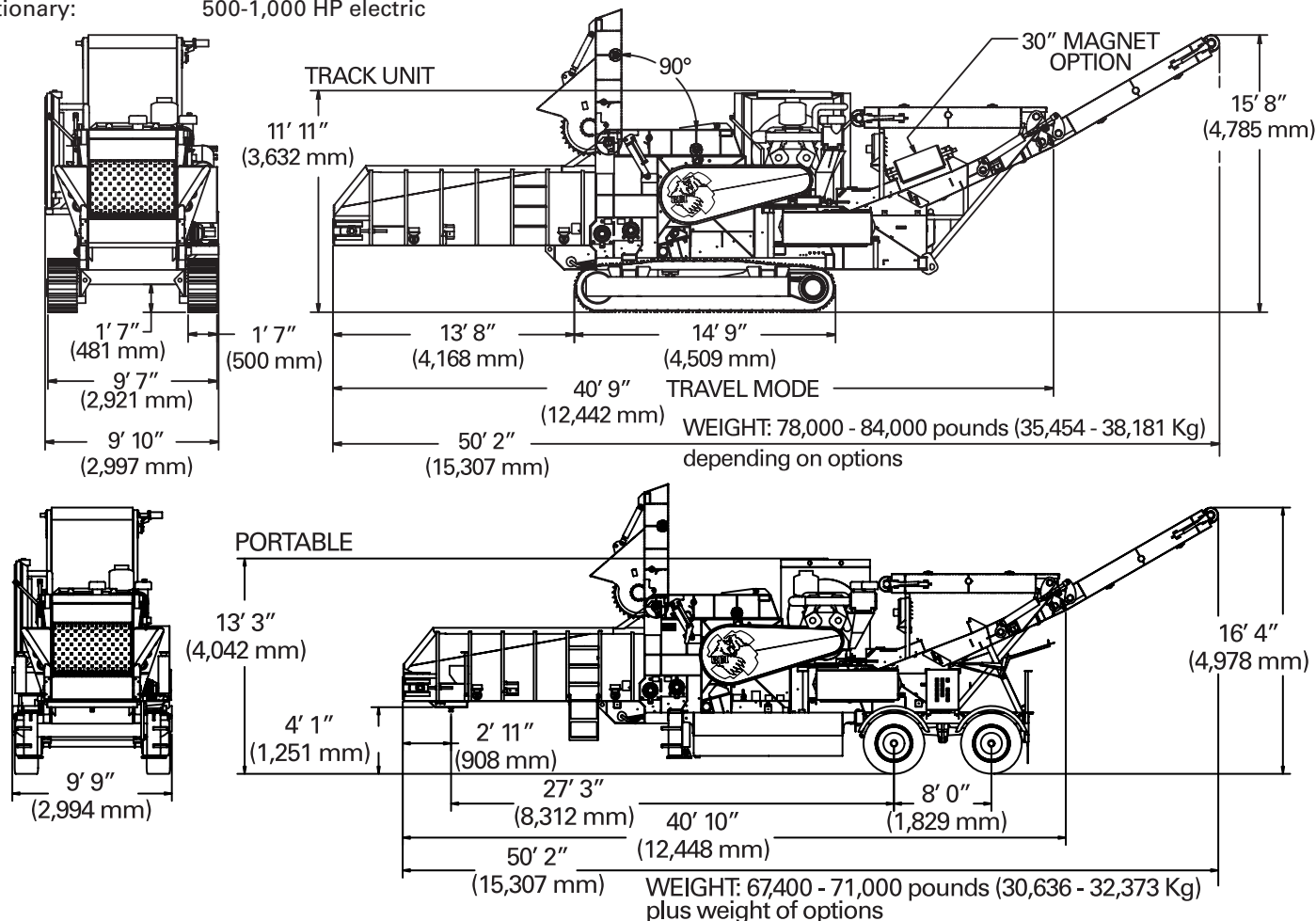
box provides service-friendly, full access for *easy* daily maintenance (say "goodbye" to scraped knees, sore backs, and banged heads). This feature offers a direct line to lift and remove screens, and greatly simplifies rotor removal through the top of the machine. All four available rotors are designed specifically for very easy disassembly and reassembly to make rotor changes quick, easy and inexpensive.

The hog chamber is a heavy-duty reinforced housing with 100% continuous welds for maximum strength and corrosion resistance. After fabrication, the hog box is line-bored for perfect fit of all components throughout the life of the machine, such as the bolt-in, 1" thick Hardox 400 wear liners. An extra heavy-duty screen frame with a bolt-in Hardox 400 screen and anvil are protected by four shear pins. A large diameter upper feed roller, with its built-in high-torque Poclairn hydraulic motor, is actuated hydraulically to provide adjustable crush force.

The downswing rotor design of the 6400 cuts the material against a heavy duty anvil that allows it to process contaminated materials, while providing an overall extremely robust grinder.

Electronic Control Systems

The second-generation IntelliGrind control system by Parker IQAN™ provides increased monitoring, protection, and control of a significantly larger number of functions, moving the 6400 closer to the ultimate goal of a fully-automated grinder. The radio remote control, with full mechanical backup, runs all functions of the machine and is set up to communicate both ways so the operator can see on the remote display all vital 6400 operating data from his loader or excavator. All set points are easily adjusted on the large operator interface screen to maximize performance.



The CBI difference: More Value — by Design

Continental Biomass Industries, Inc.

World's Best Stationary and Portable Material Recovery Systems

22 Whittier Street, Newton, NH 03858

Phone: 603-382-0556 Fax: 603-382-0557

Web: cbi-inc.com Email: info@cbi-inc.com

Distributed by:

The 6400 is built without a single compromise to be what other Grinders are not –

- Dependable
- Service Friendly
- Forgiving
- Productive
- Flexible
- Compact and Powerful

– and a damn good investment!

Discharge Conveyor

The hydraulically driven discharge conveyor is 33' long x 60" wide, with heavy-duty belt, head and tail pulleys. A cleated belt runs at variable speeds to accommodate high throughput and trailer loading conditions.

Power Unit

The 6400 is powered by one of four options:

- CAT C-18, 765 HP
- CAT 3412E, 1000 HP
- CAT C27, 1050 HP
- Electric Motors, 500 - 1000 HP for Stationary Applications

The diesel engines come equipped with:

- Extra large radiator using a Flexxaire® Auto-Reversible Fan to clean the radiator; fan pitch is tied to engine temperature to reduce HP and warm-up time, and increase fuel savings
- PTTech extra heavy-duty hydraulic clutch with pump drive, electronic controlled engagement from remote
- CAT Air Filtering System with Enginaire Pre-Cleaners

Hydraulic Systems

The 6400 is designed using Rexroth hydrostatic closed-loop hydraulic systems on major components. This dramatically improves hydraulic system efficiency, reducing both fuel-wasting heat and the overall complexity of the hydraulic systems, while it provides perfect control of all functions.

Frame

Heavy-duty formed sections with tubular cross members properly reinforced for the highest torsional loads and strength, designed to accept tracks or axles for portability, and are prepared for hydraulic stabilizers, optional overband magnet, compressor, or metal collection bin.

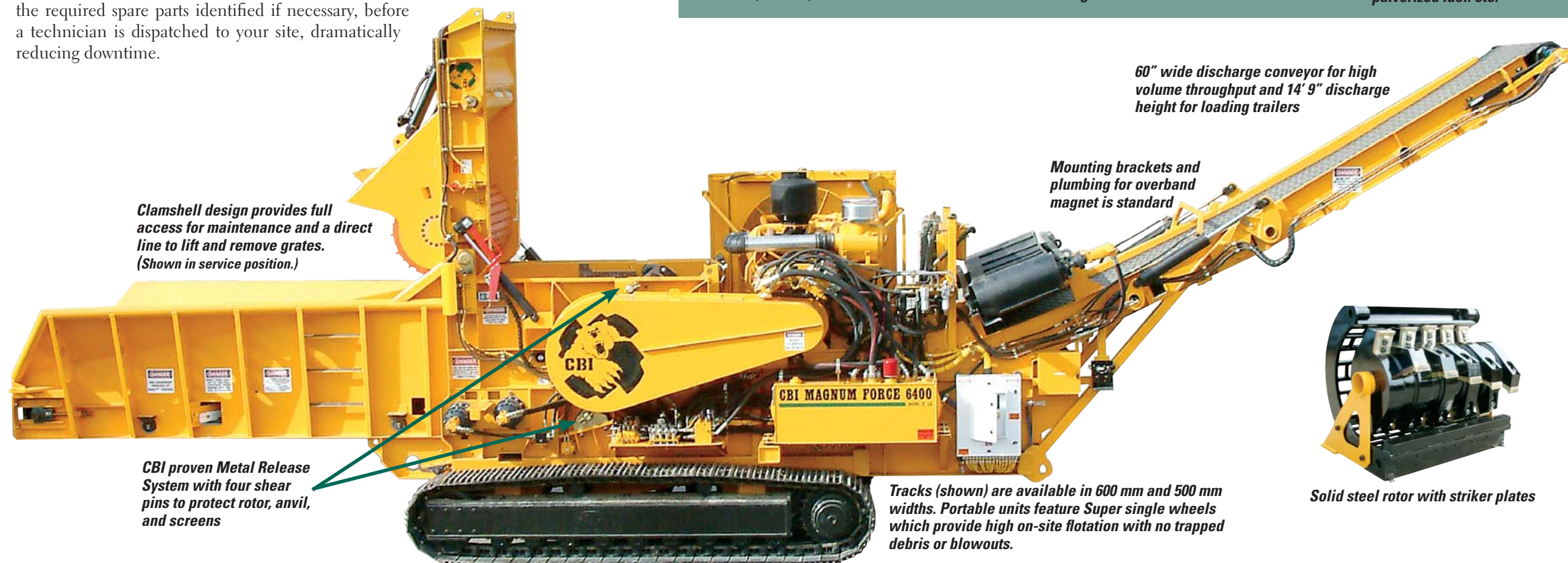
The 6400 portable features Super Single wheels and is designed to be European road legal with options that include ABS brakes, underrun protection, European axles and 24 volt electrical system.

Paint

All appropriate surfaces are sand blasted to S.S.P.C. SP 6-10 commercial-to-white finish, epoxy primed and covered with CBI yellow high gloss Dupont® polyurethane enamel paint. All components are painted while completely unassembled for 100% coverage. After painting, the equipment is assembled using only plated, Grade-8 hardware.

Remote Maintenance and Troubleshooting

The control systems are pre-wired for an optional satellite modem link that will allow a CBI Technician to have direct access to your Magnum Force 6400, whatever its location, anywhere in the World. All 6400 systems can be monitored and analyzed, and the required spare parts identified if necessary, before a technician is dispatched to your site, dramatically reducing downtime.



Clamshell design provides full access for maintenance and a direct line to lift and remove grates. (Shown in service position.)

CBI proven Metal Release System with four shear pins to protect rotor, anvil, and screens

60" wide discharge conveyor for high volume throughput and 14' 9" discharge height for loading trailers

Mounting brackets and plumbing for overband magnet is standard

Tracks (shown) are available in 600 mm and 500 mm widths. Portable units feature Super single wheels which provide high on-site flotation with no trapped debris or blowouts.

Solid steel rotor with striker plates

The World's Most Rugged Rotors...



SOLID STEEL ROTOR with 20, 6"x 8" striker plates held in place by two 1-1/4" bolts; designed specifically for contaminated demolition debris, RR ties, and MSW.



FORGED DRUM ROTOR 4" thick, with 24 bolt-on Replace-A-Face™ hammers with reversible tips for forestry debris and mulch manufacturing



CHIPPER ROTOR-2 POCKET with two rows of knives for chip lengths of 3/4" to 1-1/4"; to produce fuel chips from stem wood



CHIPPER ROTOR-4 POCKET with four rows of knives for chip lengths of 1/16" to 1/2"; to produce short chips from stem wood suitable for pelletizing or pulverized fuel, etc.

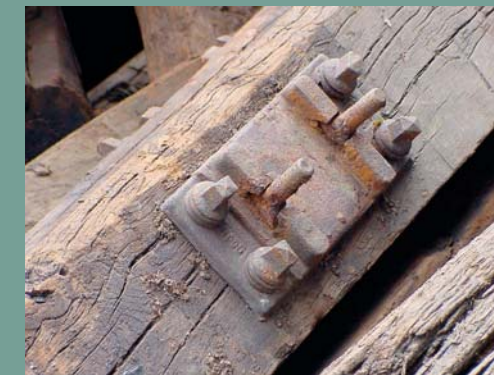
In The Field



Grind stumps, logs and brush to mulch at outstanding rates



Chip logs to various size chips at rates up to 200 tons per hour!



Grind ties with metal plates or contaminated C&D with the solid steel rotor and C&D screen!

