

**Lessee: Reese Equipment Company
LLC
Contract: 502-7640817-006**

Unit: 2016 Volvo ECR145EL

**UNIT # 0354
Location: The GW Van Keppel
Company, Springfield MO**



SPECIFICATIONS

VIN	0354
LeaseInspector ID #	0354
Year	2016
Model	Volvo ECR145EL
Location City	Springfield
Location State	MO
General Specifications	
New Hours	1337
Old Hours	1329

**Lessee: Reese Equipment Company
LLC
Contract: 502-7640817-006**

Unit: 2016 Volvo ECR145EL

**UNIT # 0354
Location: The GW Van Keppel
Company, Springfield MO**

**ADDITIONAL FEATURES OF THIS VEHICLE
COMMENTS**

Appraiser Comments:

Creditor Comments:

Public Comments:

Starts/Runs: Yes

Overall: Fair

**Lessee: Reese Equipment Company
LLC
Contract: 502-7640817-006**

Unit: 2016 Volvo ECR145EL

**UNIT # 0354
Location: The GW Van Keppel
Company, Springfield MO**

DEFICIENCY REVIEW

ITEM	QTY PRICE
1. Right Lower Step Bent Down- Repaired	\$0.00
2. Right Panels Damaged- Repaired	\$0.00
3. Left Panel Damaged Hard to Latch- Repaired	\$0.00
4. Exhaust Cover Missing Bolts-Repaired	\$0.00
5. Matrix Not Able to Get Reading- Repaired	\$0.00
6. Clean Machine- Done	\$0.00
7. Sprocket Worn - Repaired	\$0.00
8. Blade Mold Board and Top Edge Damaged- Repaired	\$0.00
9. dealer to Determine if Service is Due- Repaired	\$0.00
10. Emissions System Failure Code- Repaired	\$0.00
11. Hydraulic Line Bracket Bolts Broken Off, Lines Welded- Repaired	\$0.00
12. Bucket Edge Worn- Repaired	\$0.00
13. Bucket Sides Bent- Repaired	\$0.00
14. Bucket Bottom Pushed In- Repaired	\$0.00
15. Right Blade Pin 1/2 Way Out- Repaired	\$0.00
16. Grousers/Pads Damaged- Repaired	\$0.00
17. Bolt Blade Cylinder Guards Damaged- Repaired	\$0.00
18. Both Mirrors Damaged- Repaired	\$0.00
19. Interior Lights Inop- Repaired	\$0.00
20. Door Latch Cover Missing and Inner Panel - Repaired	\$0.00
Total	\$0.00

Lessee: Reese Equipment Company
LLC
Contract: 502-7640817-006

Unit: 2016 Volvo ECR145EL

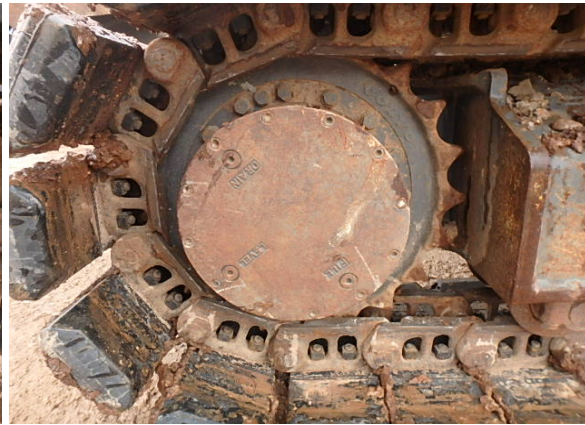
UNIT # 0354
Location: The GW Van Keppel
Company, Springfield MO



Lessee: Reese Equipment Company
LLC
Contract: 502-7640817-006

Unit: 2016 Volvo ECR145EL

UNIT # 0354
Location: The GW Van Keppel
Company, Springfield MO



**Lessee: Reese Equipment Company
LLC
Contract: 502-7640817-006**

Unit: 2016 Volvo ECR145EL

**UNIT # 0354
Location: The GW Van Keppel
Company, Springfield MO**



**Lessee: Reese Equipment Company
LLC
Contract: 502-7640817-006**

Unit: 2016 Volvo ECR145EL

**UNIT # 0354
Location: The GW Van Keppel
Company, Springfield MO**



Lessee: Reese Equipment Company
LLC
Contract: 502-7640817-006

Unit: 2016 Volvo ECR145EL

UNIT # 0354
Location: The GW Van Keppel
Company, Springfield MO



**Lessee: Reese Equipment Company
LLC
Contract: 502-7640817-006**

Unit: 2016 Volvo ECR145EL

**UNIT # 0354
Location: The GW Van Keppel
Company, Springfield MO**



**Lessee: Reese Equipment Company
LLC
Contract: 502-7640817-006**

Unit: 2016 Volvo ECR145EL

**UNIT # 0354
Location: The GW Van Keppel
Company, Springfield MO**



Lessee: Reese Equipment Company
LLC
Contract: 502-7640817-006

Unit: 2016 Volvo ECR145EL

UNIT # 0354
Location: The GW Van Keppel
Company, Springfield MO



**Lessee: Reese Equipment Company
LLC
Contract: 502-7640817-006**

Unit: 2016 Volvo ECR145EL

**UNIT # 0354
Location: The GW Van Keppel
Company, Springfield MO**

